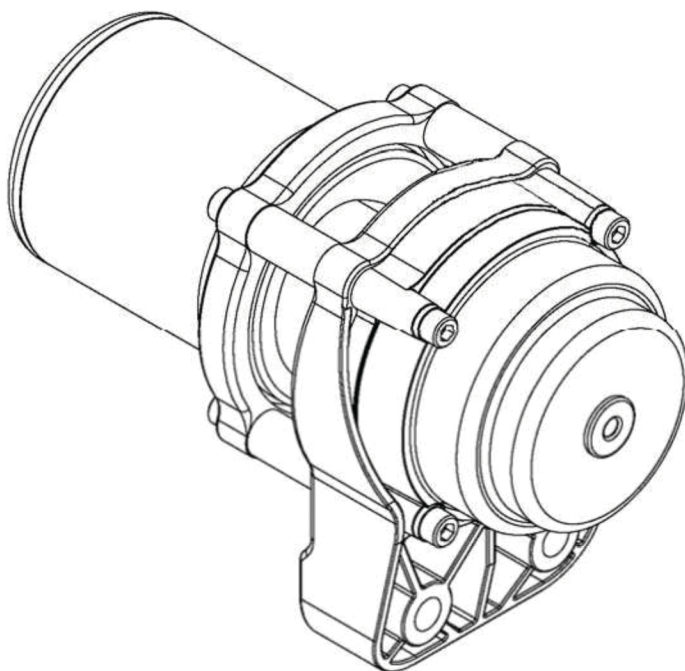




# **Electric Lift Kit**

**MODEL NUMBER: 15-0060**

**OWNER'S MANUAL**



**CUSTOMER MUST RECEIVE A COPY OF THIS  
OWNERS MANUAL AT TIME OF SALE**

## **GENERAL SAFETY PRECAUTIONS**

### **WARNING!**

#### **MOVING PART HAZARDS**

To prevent serious injury and property damage:

- Do not operate or install this product without reading and understanding these instructions.
- Keeps hands clear of nylon straps during operation.
- Inspect lift motor installation and nylon strap condition before operating winch.
- Do not use as a hoist.
- Do not use to move people.
- Never handle nylon straps or strap connections while in tension.
- Prior to initiating lift operation be sure any element which can interfere with safe winching is removed.
- Do not disengage clutch if winch is under load or nylon strap is in tension.

#### **BATTERY HAZARDS**

- Batteries contain gasses which are flammable.
- Wear eye protection and remove all metal jewelry when working with battery.
- Do not lean over battery while making connections.
- Failure to take proper precaution may result in fire or serious injury.

#### **CAUTION! TO AVOID INJURY AND PROPERTY DAMAGE:**

- Do not use lift to secure a load during transport.
- Do not submerge in water.
- Do not use to tow other vehicles.
- Do not use as a recovery device
- Route support straps so they do not interfere with any plastic body parts

### **Safety First!**

When installing your electric lift system, read and follow all mounting and safety instructions. Always use caution when working with electricity and remember to verify that no exposed electrical connections exist before energizing your winch circuit.

### **PowerMax Electric Lift Specifications:**

- 1) Rated Line Pull: 500lbs. (25 Amp Draw)
- 2) Motor: 12V DC , 0.4hp (310w) permanent magnet
- 3) Control: Handlebar mounted Mini-rocker switch
- 4) Geartrain: 3-Stage Planetary
- 5) Brake: patent-pending disc brake
- 6) Recommended Battery: 12 Volt, 12 Amp-hour minimum
- 7) Battery Leads:10 gauge

To install the complete kit, you will need to mount the winch to the plow (or other compatible product), the rocker switch to the handlebar and wiring harness to the vehicle. Mounting locations may vary depending on make and model of the vehicle. Read and understand the following instructions to choose the appropriate mounting locations.

The Cycle Country PowerMax Electric Lift can be installed on most Cycle Country plow systems and use electric power from the vehicles battery to raise and lower the plow. A handlebar mounted switch allows the operator to easily operate the lift from the driver's seat. A built-in safety feature prevents the electric lift from being operated unless the vehicles ignition switch is turned on.

# Installation:

## Step 1: Mount the lift motor

- Mount the lift motor to the push tube as shown in figure 1.

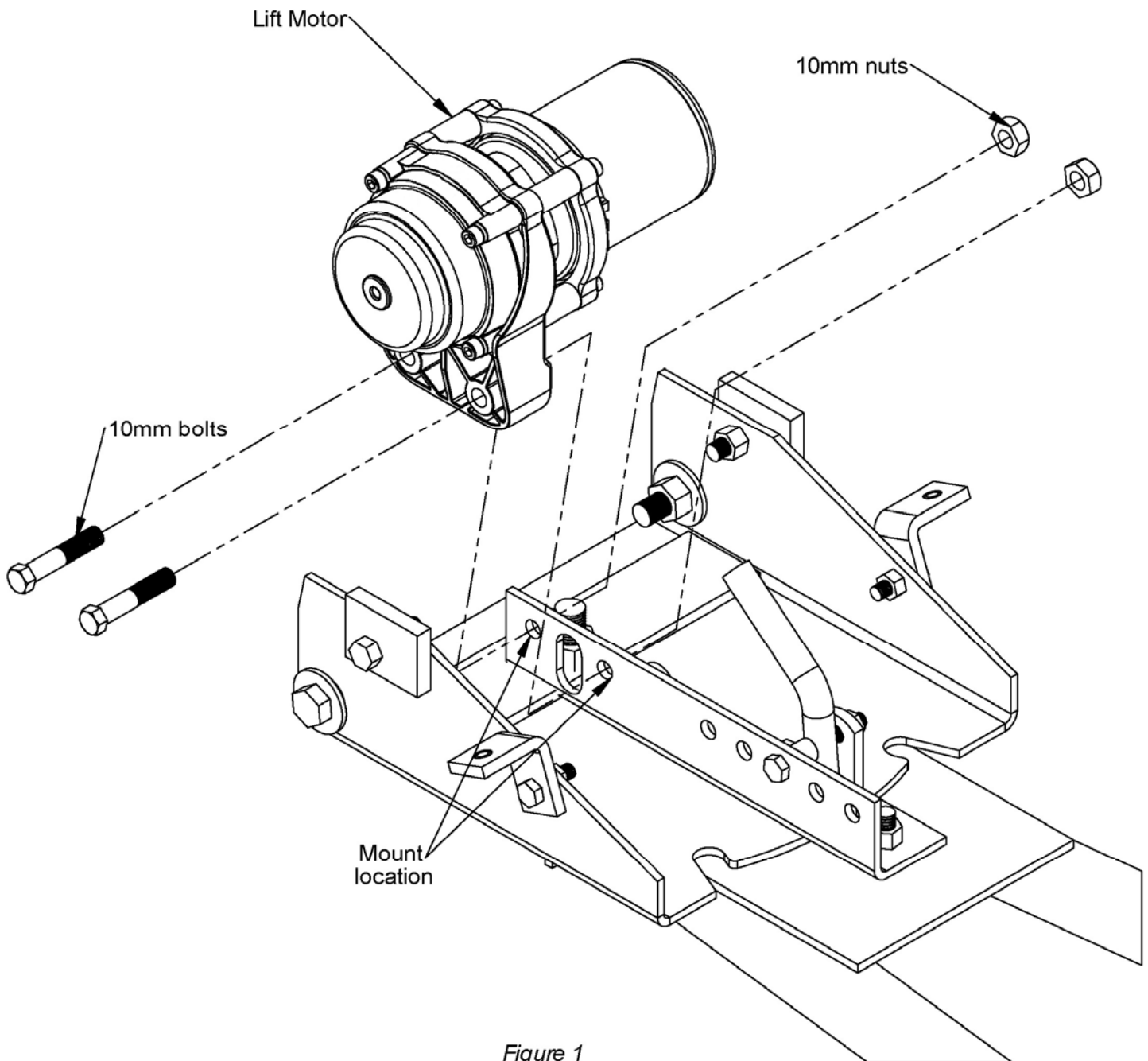
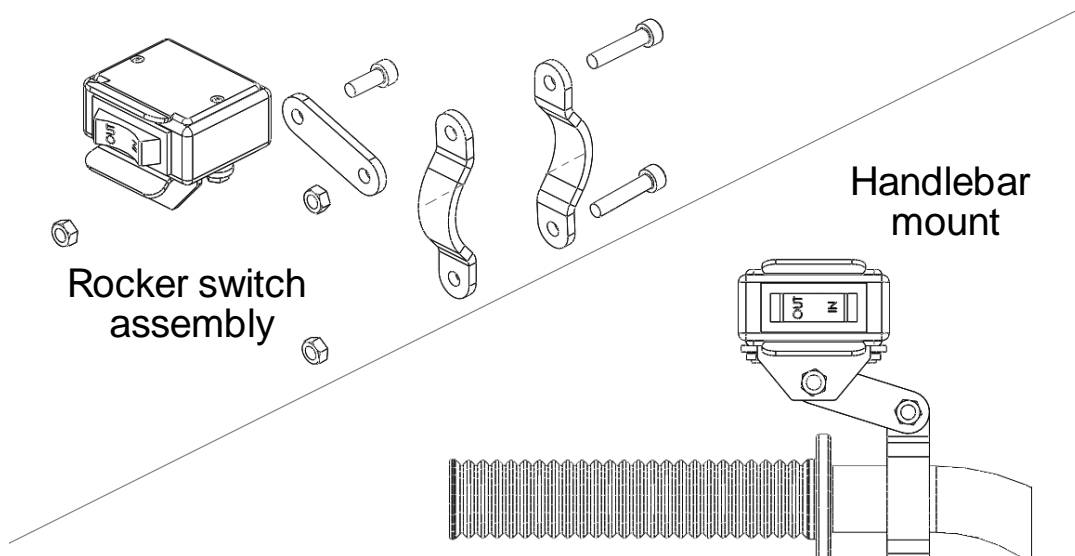


Figure 1

## Step 2: Handlebar Switch Installation

- Install the rocker switch to the handlebar using the hardware included in this kit. (see figure 2 and figure 6)



- It is recommended that the switch be installed on the left handlebar. A piece of electrical tape wrapped around the handlebar will help prevent rotation of mount on the handlebar.
- Do not clamp over any hoses or cables.
- Exact positioning may vary depending on the vehicle make and model.

### **WARNING!**

TO PREVENT SERIOUS INJURY OR DEATH FROM ELECTRICAL FIRE:

- Do not route electrical cables across sharp edges.
- Do not route electrical cables through or near moving parts.
- Do not route electrical cables through or near any high temperature parts.
- Avoid pinch and wear/abrasion points when installing all electrical cables.
- Use caution when moving or repositioning any vehicle controls so as to not compromise the safe operation of the vehicle. Select a mounting position that will provide clearance for all vehicle controls.
- Before securing the switch cable with tie wraps, make sure that the handlebars and all controls have full range of motion.

## Step 3: Control box mounting

- The control box is a primary safety feature in your winch system. It disconnects your winch from its power source when the vehicle is not in use. The contactor must be correctly installed to work properly.
- Secure the control box using the included straps or mount using hardware (not included).
- Exact location will vary depending on the vehicle.
- Ensure the control box mounting location selected provides sufficient clearance from all metal structures such as frame tubes.
- After choosing a mounting location for the control box make certain that all wiring will reach the appropriate location. (see figure 3)

## Step 4: Wiring Installation

- Connect the switch wires to the control box. Splice the red 20ga wire to a wire supplying +12 volts only when the vehicle ignition is turned on.
- Attach the red power wire to the Positive (+) post on the battery. Attach the black power wire to the Negative (-) post on the battery.

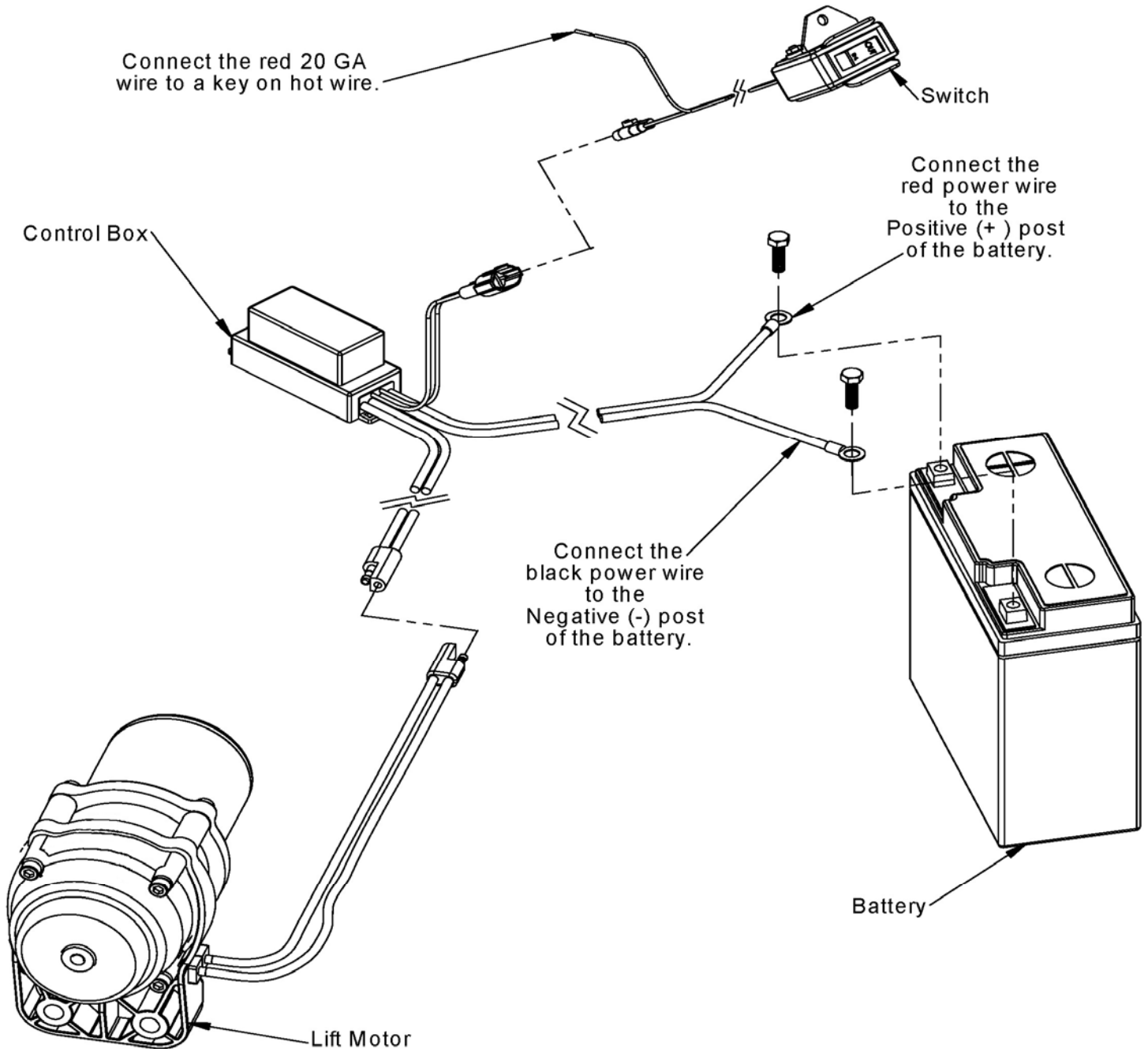


Figure 3

## Step 5: Attaching the lift to the vehicle

- Wrap the loop strap around the top rack, bumper or other location that is suitable to support the weight of the plow.
- Connect the loop strap to the adjustable lift strap using the snap pin.
- Connect the wire leads from the control box harness to the wire leads from the lift motor.

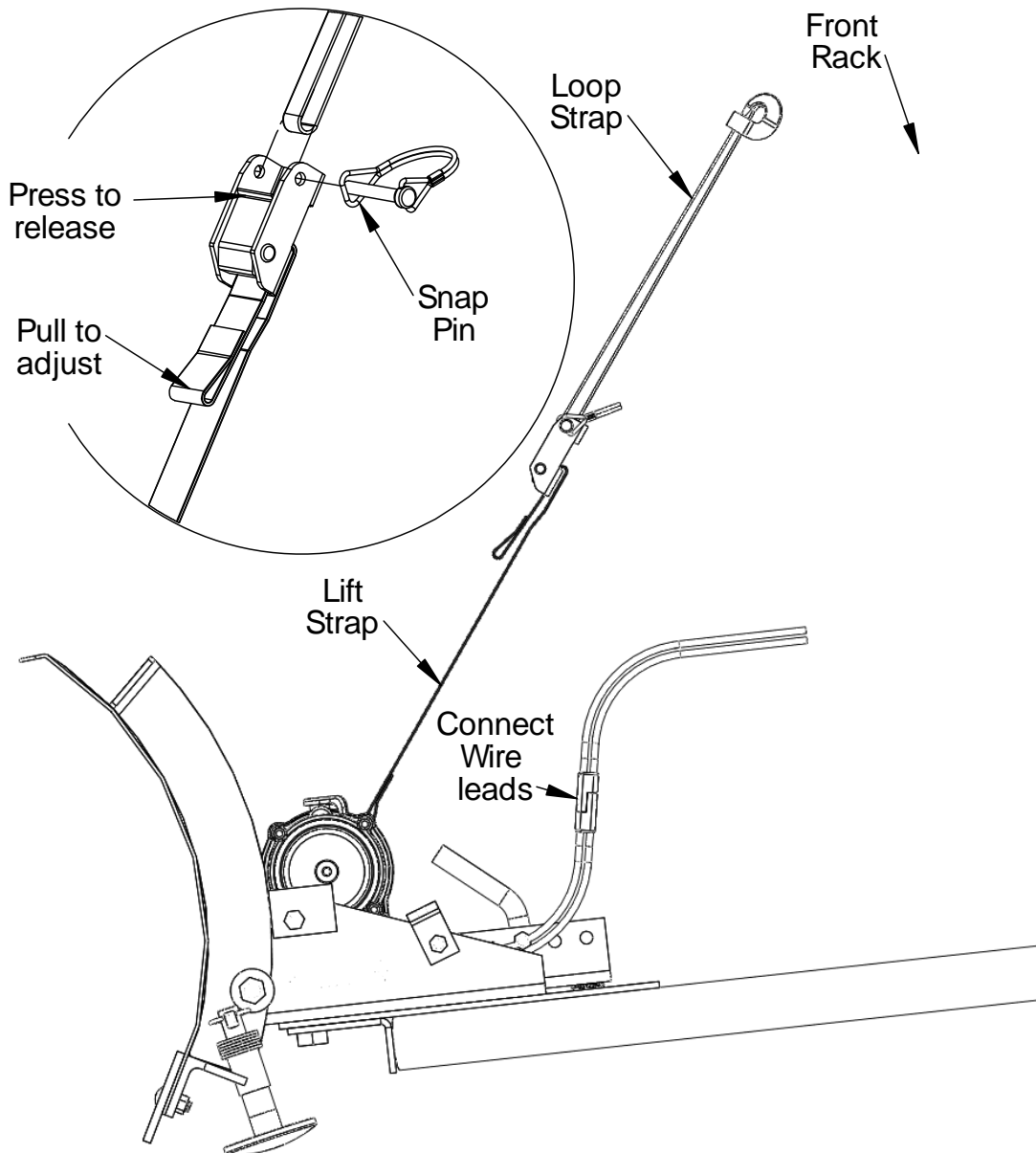


Figure 4

### **CAUTION!**

TO PREVENT INJURY OR DAMAGE TO THE VEHICLE OR THE STRAPS:

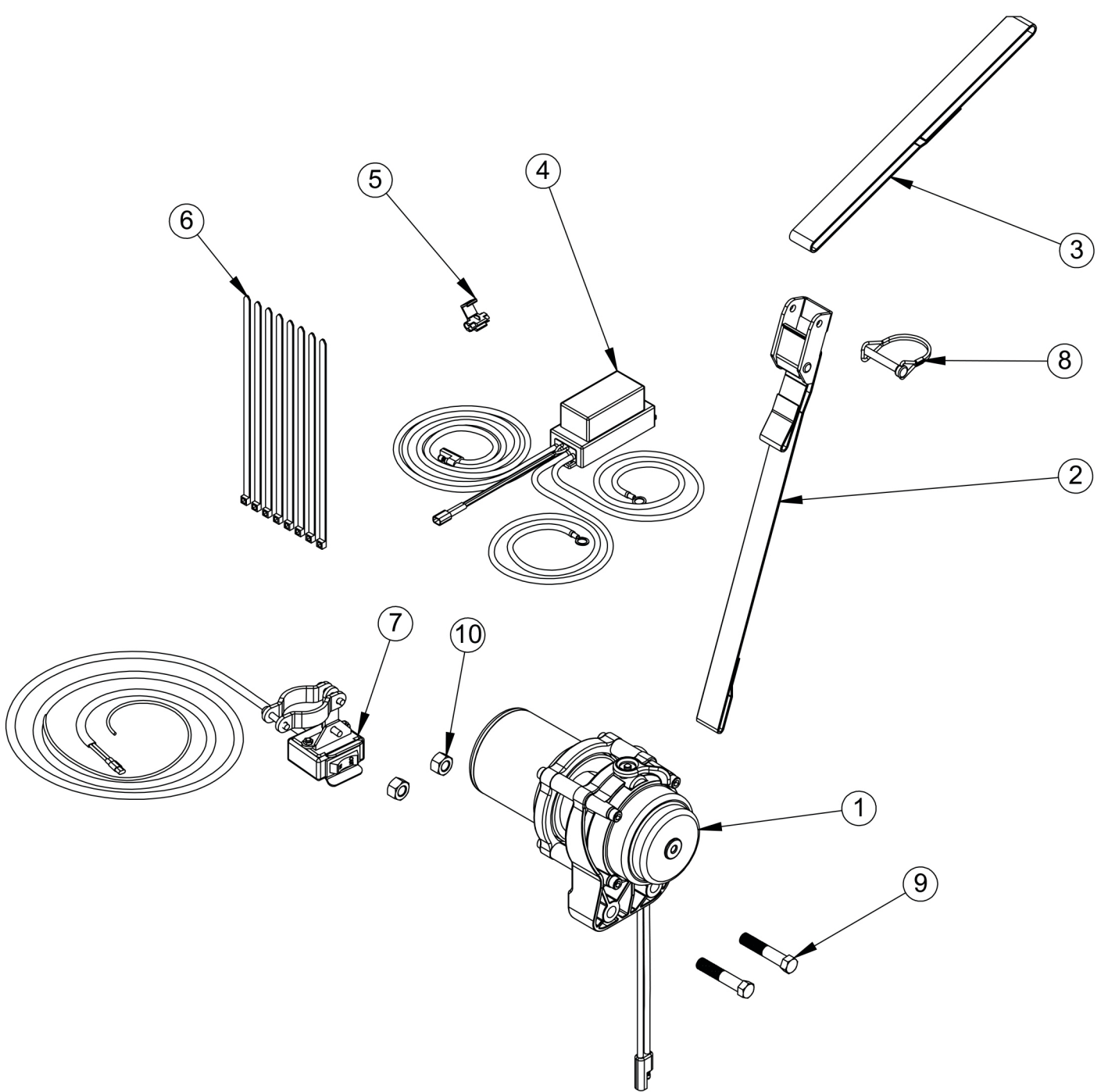
- Do not wrap nylon strap across sharp edges.
- Do not allow the nylon straps to rub against the body of the vehicle.
- Do not adjust or try to release straps under tension.

## **Step 6: Operating the lift**

- Verify that the lift is operational by turning on the vehicle ignition and pressing the handlebar switch in either direction.
- The lift motor can be operated in either direction to lift the plow. To reverse the direction, hold the switch down when letting out the strap allowing the strap to wrap back on the spool in the opposite direction. Select the direction of the wrap that minimizes the contact between the strap and the spool housing.

### **WARNING: IMPROPER USE CAN CAUSE PERSONAL INJURY OR PROPERTY DAMAGE**

- Do not lift the plow high enough to cause the push tube to contact the bottom of the vehicle, otherwise damage to the vehicle or plow system may result.
- Do not disengage the spool while under tension.



## Model Number 15-0060 Parts List

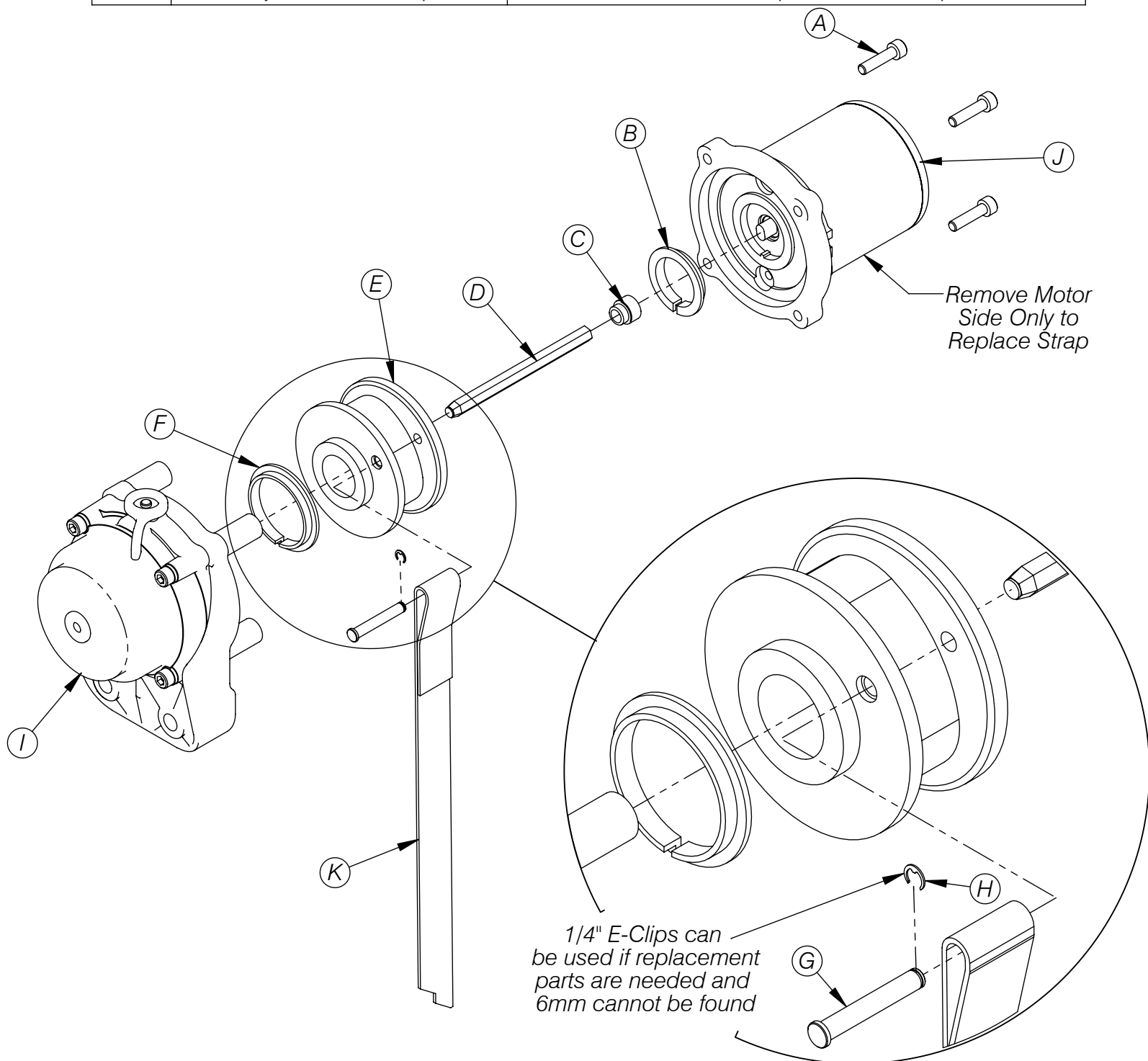
ITEM NO.	QTY.	PART NO.	DESCRIPTION
1	1	-	PowerMax Lift
2	1	RPR0092	Lift Strap Adjustable
3	1	RPR0093	Loop Strap
4	1	RPR0094	Control Box
5	1	PUR1377	Scotch Lock
6	8	PUR1946	Cable Tie 8"
7	1	RPR0095	Switch
8	1	RPR0099	Snap Pin
9	2	PUR3028	10mm x 50mm Bolt
10	2	PUR3069	Nylon Lock Nut M10

*Figure 6*



# PowerMax 15-0060 Lift Strap Replacement Diagram

ITEM	DESCRIPTION	NOTE
A	6mm X 20mm Socket Head Bolt	Use 5mm Allen Wrench
B	Small Bushing	Insert as shown to motor end
C	Axle Adapter	Connects Axle to Motor Output Shaft
D	Axle	Connects Motor to Gear Assembly
E	Strap Housing	Strap Housing
F	Large Bushing	Insert as shown to gear assembly end
G	Strap Pin	Attaches Lift Strap to Strap Housing
H	6mm E-Clip	Use Screw Driver to remove and Install E-Clip
I	Gear Assembly	
J	Motor	
K	Adjustable Lift Strap	Use Small Loop End of Lift Strap





## Limited Lifetime Warranty

From the original purchase date, Cycle Country (a Kolpin Powersports brand) warrants to the original purchaser the mechanical components of the winch will be free of defects in material and workmanship for the lifetime of the winch and the electrical components will be free of defects in material and workmanship for a period of 1 year.

This warranty does not apply to wire rope, synthetic rope or parts that have been damaged by accident, misuse, alteration, abuse, improper service, normal wear or causes beyond the manufacturer control.

To obtain warranty service call 1-800-841-2222 to request a Return Merchandise Authorization (RMA) number and shipping details. This warranty does not cover removal or reinstallation fee's of the winch. All transportation cost of submitting product to Kolpin for Cycle Country brand products for warranty consideration are the responsibility of the shipper.

### **Cycle Country**

#### **A Kolpin Powersports Brand**

**205 N Depot St**

**Fox Lake, WI 53933**

**Toll Free: 1-800-841-2222**

**Fax: 1-800-245-7569**

**E-Mail: [ccac@cyclecountry.com](mailto:ccac@cyclecountry.com)**

**Visit us on the web at: [cyclecountry.com](http://cyclecountry.com)**