

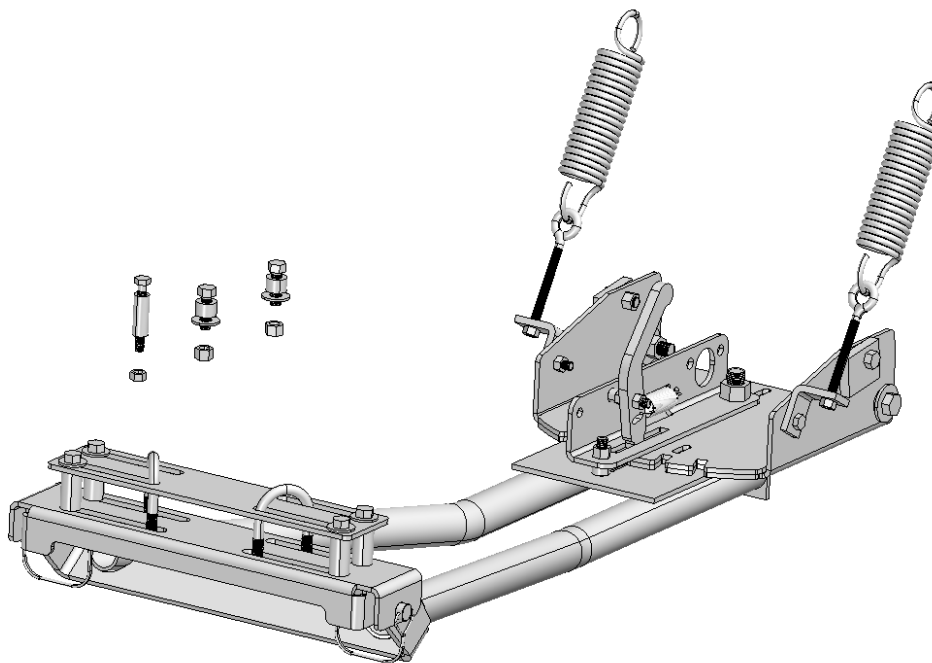


FORWARD MOUNT™

Push Tube and Mount Kit

ASSEMBLY / OWNER'S MANUAL

Part No: 15-0320



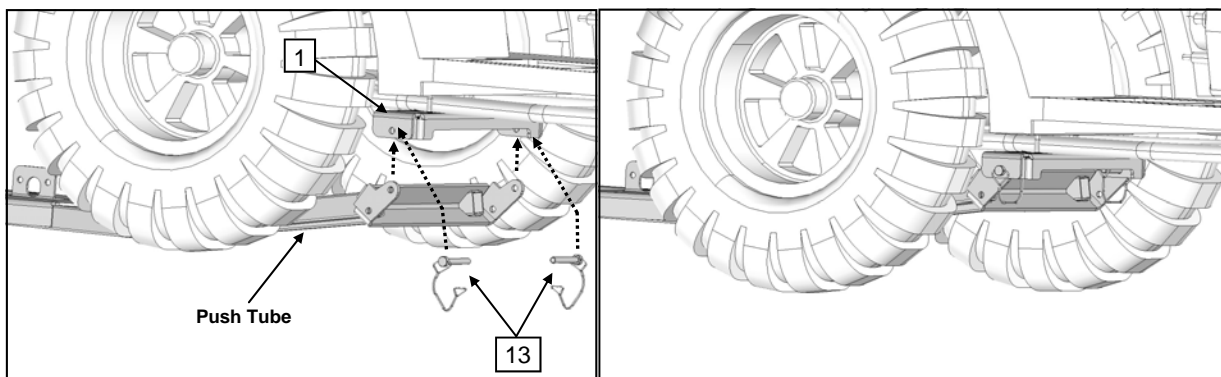
OPERATING INSTRUCTIONS

Congratulations! You've just purchased the most durable plow components in the industry. The **Forward Mount™ Push Tube and Mount Kit** works great for all types of plowing. With proper care and maintenance, your plow system will last for years to come!

This plow kit attaches to your ATV using a patented, unique Forward Mount™ system, which allows you to push snow or landscape materials. It is designed to fit most models with 350cc or larger engines. The blade pivot design allows the operator to select multiple angled left-or-right positions, and also incorporates a spring-loaded 'trip' system that allows the blade to handle impacts with small obstructions.

NOTICE
<p>This Forward Mount™ Kit includes these components:</p> <ul style="list-style-type: none">• Forward Mount™ Push Tube Assembly• Universal Forward Mount™ System <p>Plow operation requires additional components for operation: <i>Plow Blade</i> <i>Winch Kit, Electric Lift or Manual Lift *</i></p> <p><i>*These components may be specific to your vehicle.</i></p>

PUSH TUBE ENGAGEMENT: Place push tube under the ATV as shown and insert into the left and right channels of the assembled Forward Mount Weldment, Item #1. Fasten the push tube to the mount with supplied lock pins, Item #13.




Please read and understand all assembly instructions, notices and warnings before assembling and operating your plow system.


Follow these guidelines to ensure satisfactory operation:

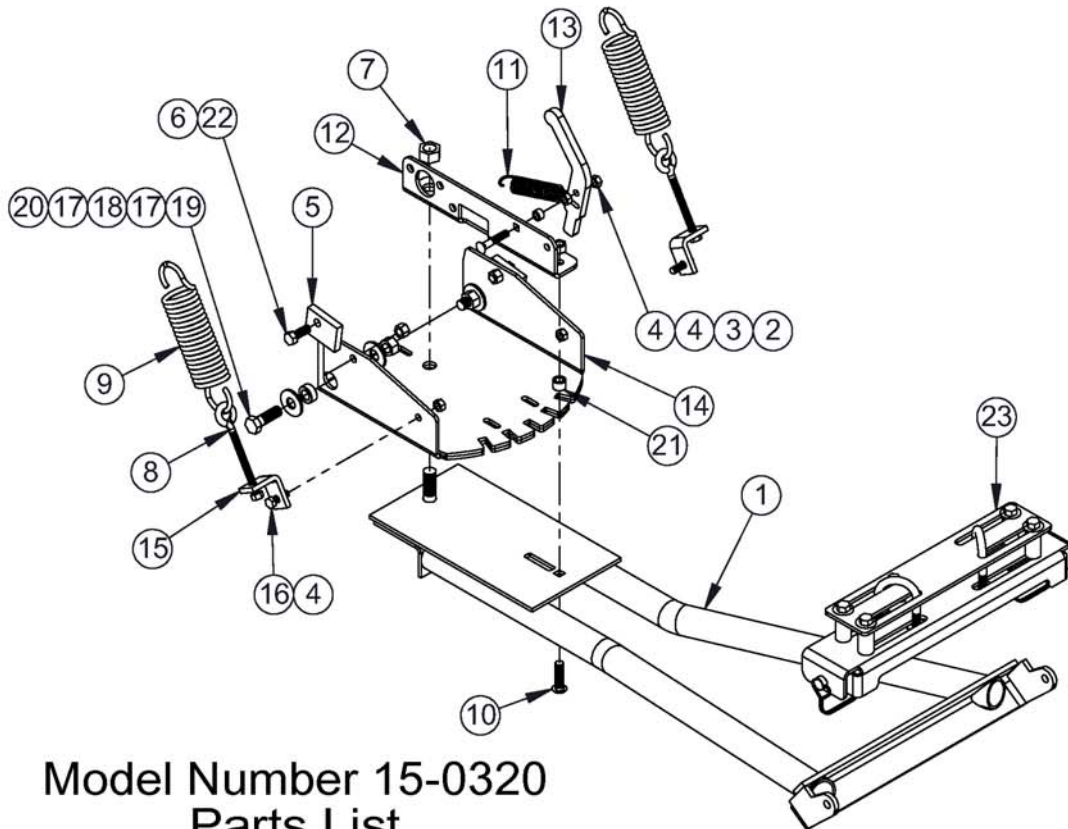
- Read this manual and your ATV operators manual before use.
- Periodically check for wear and tightness of all fasteners. Replace or re-torque fasteners as necessary.
- Before first use, set plow in the furthest right or left angled position to check for clearance between the plow and front tires.
- Operate with extreme caution on slopes and rough terrain. Be familiar with the area before you plow.
- Be aware of immovable objects that could be hidden in the area you are plowing.
- To avoid damage when pushing snow into a pile, reverse direction before raising the plow blade.
- Do not ram the plow blade into piles of snow.
- For best results, set the suspension preload of your ATV to the stiffest setting.
- To reduce steering effort and increase mobility, set the air pressure of your tires to the maximum pressure specification.
- The plow blade assembly is designed to “trip” when it strikes an object or digs in too far. When pressure is released, the plow springs back into position. *Spring tension can be increased by tightening the locknuts on the bottom of the eyebolts. For less spring tension, loosen the locknuts.*
- The plow skids are adjustable. General skid setting is even with the plow wear bar bottom edge, higher settings reduce the chance of rocks and gravel from being collected.
- To increase traction during plow operation, operators can try: Securing weight to the ATV for additional tire downforce, reducing tire air pressure, or installing tire chains.

SAFETY INFORMATION

Our plow systems were designed with your safety in mind. Please read and understand all Cautions, Notices and Warnings in this manual before you begin. In order to protect you and your ATV, certain parts of the plow system and/or hardware are designed to fail when the equipment is over-stressed.

 WARNING
<p>To avoid personal injury or damage to your vehicle:</p> <p>Do not exceed 5 mph (8 kph) with the blade installed</p> <p>Be aware that vehicle ground clearance is reduced with plow system installed</p> <p>Keep yourself, other people and pets away from the blade and moving parts during operation</p> <p>Before adjusting blade angle or disconnecting the plow system, stop the ATV engine and set the parking brake</p> <p>Remove your plow system before trail riding</p>

 WARNING
<p>To avoid personal injury or damage to your vehicle:</p> <p>Do not install forward mount system over plastic guard components, which can compress over time and loosen the installation, resulting in poor product performance and/or damage to the ATV.</p> <p>Do not allow forward mount system to interfere with ATV operational items such as brake lines, coolant hoses, control cables, steering or any other function.</p>

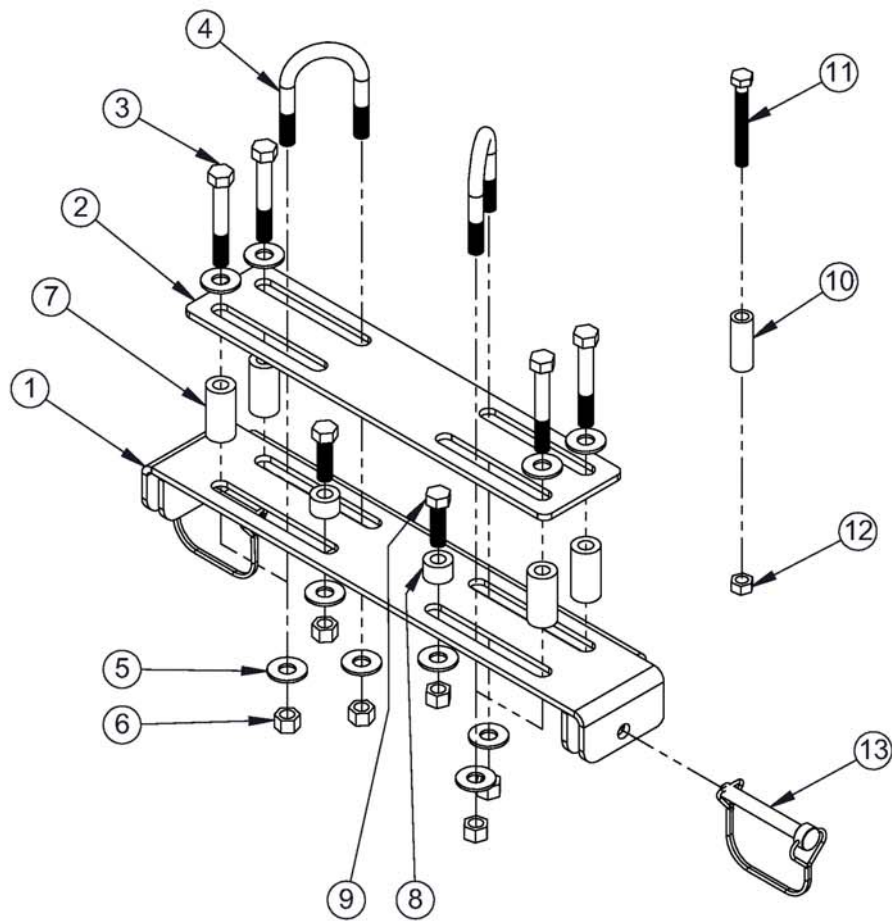


Model Number 15-0320 Parts List

ITEM NO.	QTY.	PART NO.	DESCRIPTION
1	1	CYC6038	Pushtube Forward Mount Weldment
2	1	PUR2422	5/16" x 1 3/4" Carriage Bolt
3	1	PUR1360	Sleeve Bushing
4	6	PUR1275	Locknut 5/16" Nylock Clear Zinc
5	2	CYC0813	Blade Stop
6	3	PUR1272	Locknut 3/8" Nylock
7	1	PUR1283	Locknut 5/8" Nylock
8	2	PUR1216	Eyebolt 5/16-18UNC x 4-1/4
9	2	PUR1409	Blade Spring
10	1	PUR1186	Carriage Bolt 3/8" x 1-1/2"
11	1	PUR1437	Spring
12	1	CYC2070	Lever Bracket
13	1	CYC2069	Lever
14	1	CYC2065	Blade Hinge Weldment
15	2	CYC0812	Blade Spring Bracket
16	2	PUR1155	5/16" x 1" Bolt
17	4	PUR1235	Flatwasher 1/2"
18	2	PUR1411	Bushing
19	2	PUR1110	Bolt 1/2" x 1-1/2"
20	2	PUR1261	Nut 1/2" Nylock
21	1	PUR2424	Bushing .385" x .625" x .450"
22	2	PUR1140	3/8" x 1" Bolt
23	1	CYC6043	FM Mount Kit

PARTS ORDERING INFORMATION:

Replacement fasteners are common-type and can be purchased locally. Use minimum Grade 5 galvanized fasteners.



Model Number CYC6043 Parts List

ITEM NO.	QTY.	PART NO.	DESCRIPTION
1	1	CYC6041	Foward Mount Weldment
2	1	CYC6042	Back Plate
3	4	PUR1146	3/8" x 2-1/2" Bolt
4	2	PUR1415	U-Bolt 3/8" x 1-1/2" x 2-1/2"
5	10	PUR1243	3/8" Flatwasher
6	6	PUR1272	Locknut 3/8" Nylock
7	4	CYC2312	Spacer
8	2	CYC6118	Spacer
9	2	PUR1142	Bolt 3/8" x 1-1/4"
10	1	CYC6117	Spacer
11	1	PUR1161	5/16" x 2-1/2" Bolt
12	1	PUR1275	Locknut 5/16" Nylock Clear Zinc
13	2	PUR1286	3/8" x 2 1/2" Lock Pin

PARTS ORDERING INFORMATION:
 Replacement fasteners are common-type and can be purchased locally. Use minimum Grade 5 galvanized fasteners.

BEFORE YOU BEGIN:

- Please read and understand all instructions.
- Verify all parts and tools are accounted for.
- To ensure a satisfactory installation, follow all steps correctly and in the sequence described.
- All directions referring to right and left are when the rider is sitting on the machine

TOOLS REQUIRED:

- Basic Hand Wrench and Socket Set
- Torque Wrench
- Plastic Cutting Tool

INSTALLATION NOTES:

NOTICE

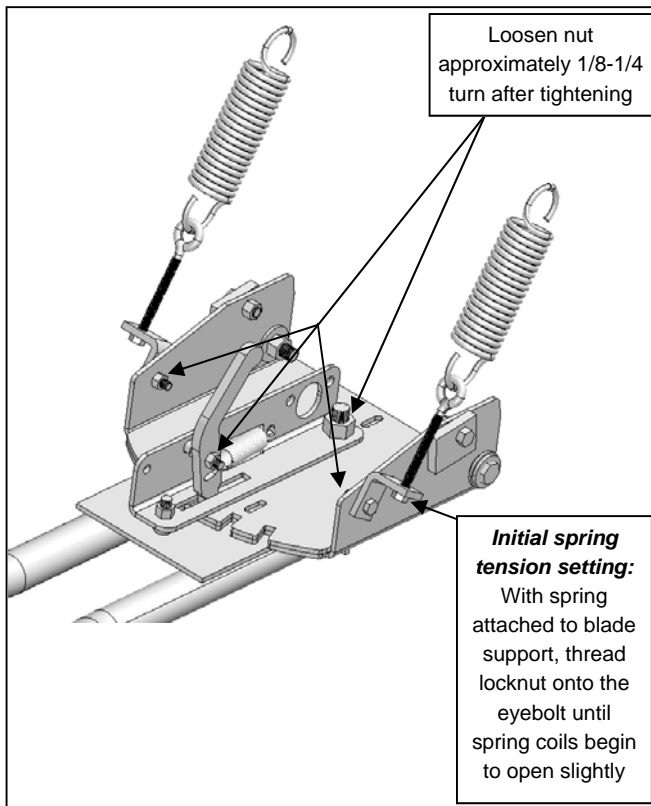
Depending on application, some trimming of plastic guards or panels may be required to install the Forward Mount.

NOTICE

Refer to Installation Steps A, B, C or D of the Forward Mount installation manual, depending on your application.

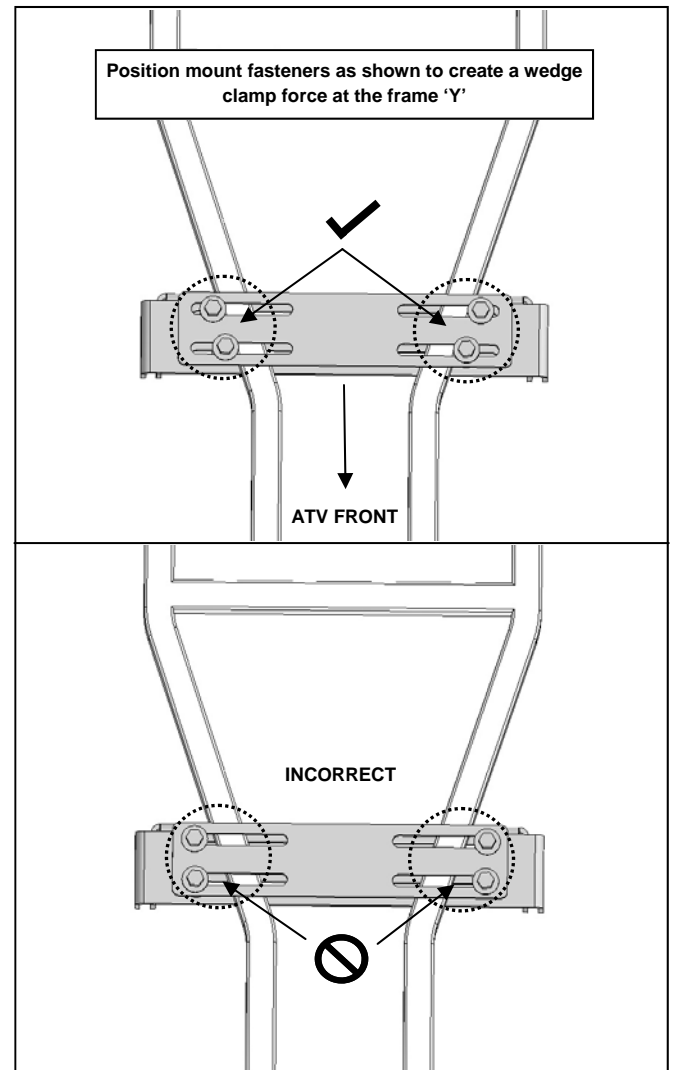
NOTICE

Blade hinge parts must pivot - See Illustration and notes



NOTICE

Position fasteners of the Forward Mount against the frame as closely as possible - See Illustration



STEP 1 - ASSEMBLE THE PUSH TUBE:

1. Assemble the lever bracket as shown in Illustration 1.

NOTICE

1A - Torque inside nut, Item #4, to 12ft. lbs. (13.5 Nm)

NOTICE

1B - Tighten outside nut, Item #4, then back out 1/8 -1/4 turn to allow lever, Item #13 to pivot freely

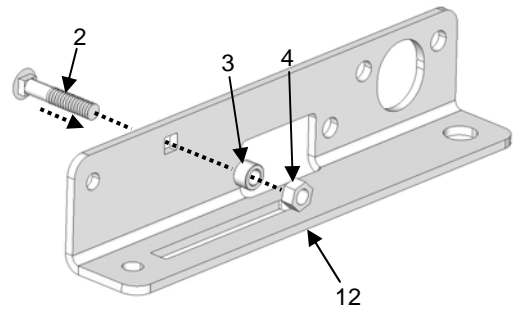
NOTICE

1B - Lever can be installed in either direction that offers the most clearance for operation

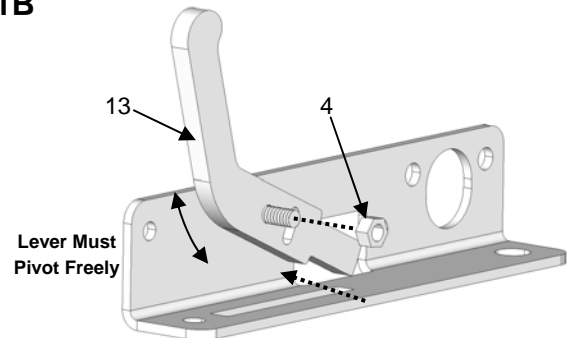
NOTICE

1C - Install Lever Spring, Item #11

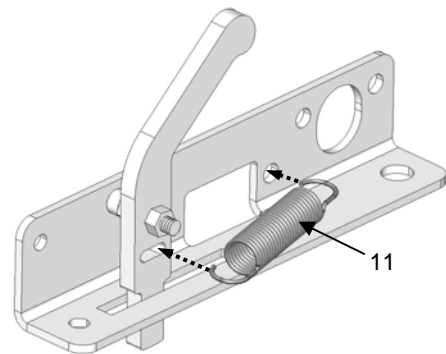
1A



1B

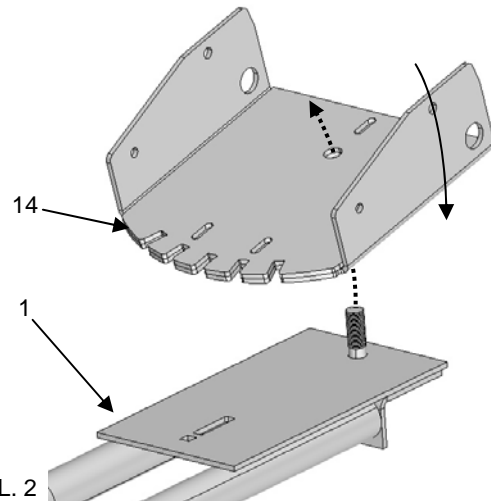


1C




ILL. 1

2. Place hinge pivot bracket, Item #14, onto the push tube, Item #1, as shown in Illustration 2.



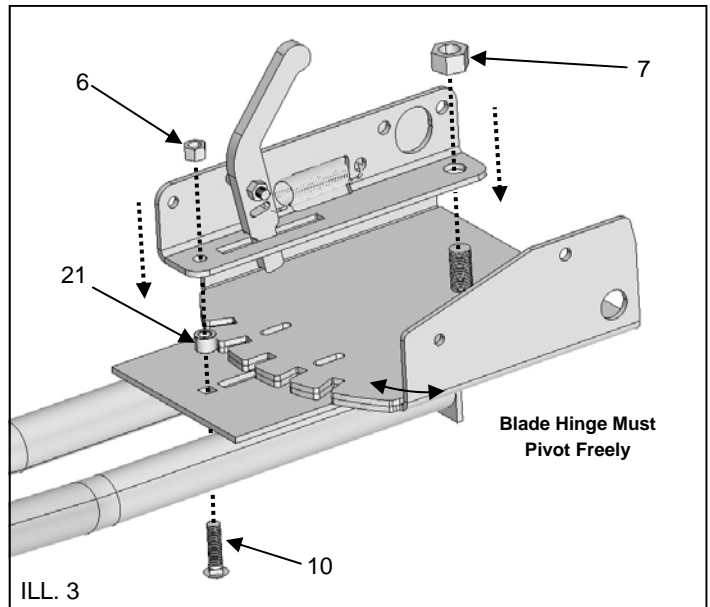
ILL. 2

- Place the assembled lever bracket, onto the assembled push tube and pivot hinge as shown in Illustration 3.
- Install spacer, Item #21 and fasteners, Item #10 and #6. Torque to specification.

 = T
Item #6 - FASTENER TORQUE: 17ft. lbs. (23 Nm)

- Install Locknut, Item #7. See NOTICE.

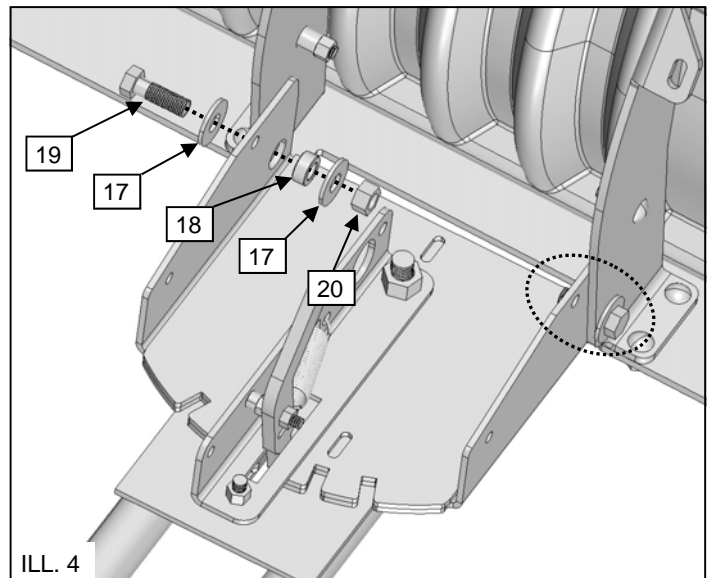
NOTICE
Item #7 - Tighten lock nut, then back out 1/8-1/4 turn to allow blade hinge, Item #14 to pivot freely



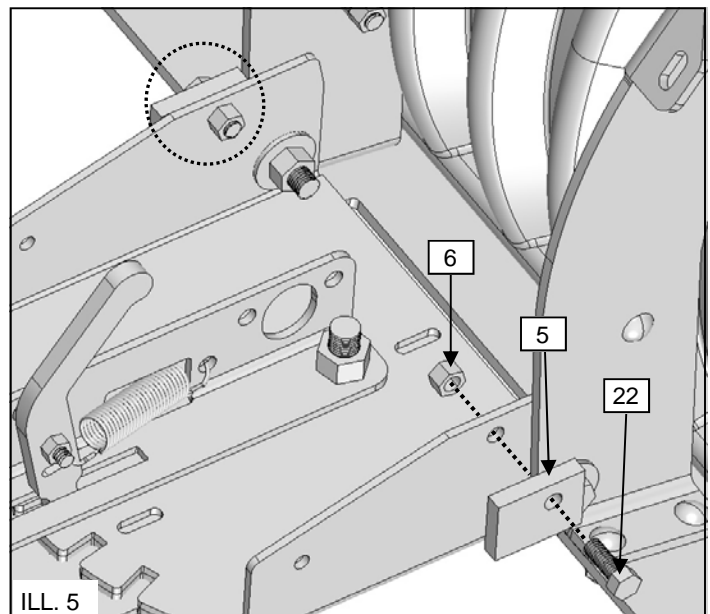
STEP 2 - INSTALLING ASSEMBLED PUSH TUBE TO THE PLOW BLADE:

- Place bushings, Item #18 into the pivot hinge as shown. Attach the assembled push tube to a previously assembled blade. Place washers, Item #17 over the holes and fasten the push tube to the blade using bolts, Item #19 and locknuts, Item #20. See Illustration 4. Torque fasteners to specification.

 = T
FASTENER TORQUE: 50 ft. lbs. (67.7 Nm)

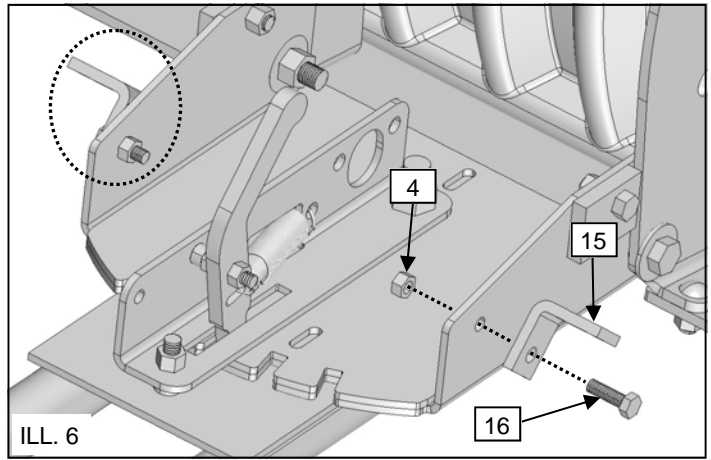


- Install the blade stops, Item #5. Fasten with bolts, Item #15 and nuts, Item #6. See Illustration 5. *Do not torque fasteners at this time.*



- Attach the blade spring brackets, Item #15, to the pivot bracket using bolts, Item #16 and nuts, Item #4. Tighten #4 sufficiently, then back-off 1/8-1/4 turn to allow bracket to pivot freely. See Illustration 6.

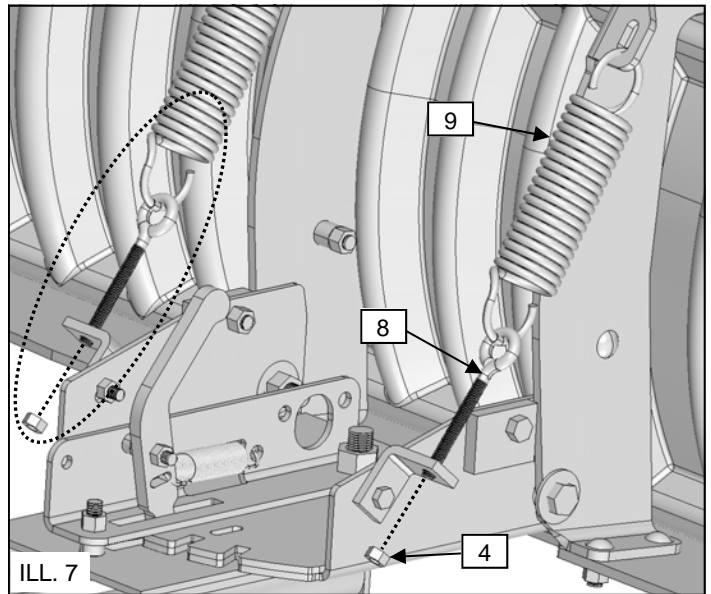
NOTICE
Item #15 - Bracket must pivot freely



- Assemble blade springs, Item #9 and eyebolts, Item #8 between the blade assembly and spring brackets as shown in Illustration 7. Fasten and adjust tension with locknuts, Item #4.

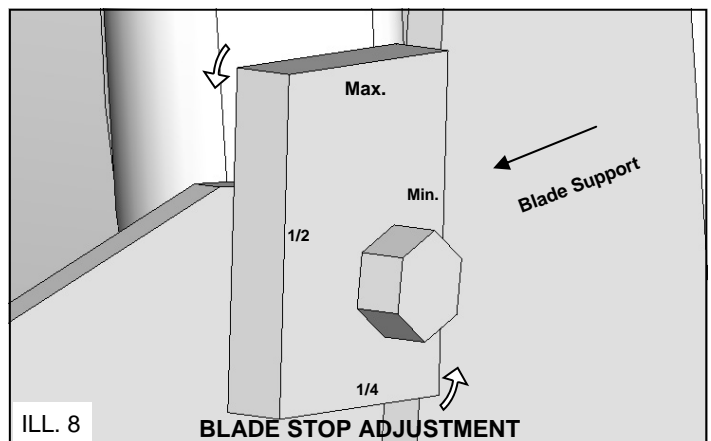
NOTICE
INITIAL BLADE SPRING TENSION: Refer to Installation Notes on Page 6

NOTICE
Spring Hook Orientation Is Away From Blade See Illustration 7




- After the plow system is mounted to the ATV, adjust the blade stops and blade spring tension as desired to achieve best performance. See Illustration 8.

NOTICE
BLADE TILT / STOP ADJUSTMENT: Perform with plow system mounted and in the down position.
Blade position should be vertical for best performance



- Tighten the blade pivot fasteners to specification once the desired stop position is determined.

 = T
FASTENER TORQUE: 17ft. lbs. (23 Nm)



One Year Limited Warranty

For the period of one (1) year from the purchase date, Cycle Country Accessories Corporation will replace for the original purchaser, free of charge, any part or parts found upon examination by Cycle Country Accessories Corporation to be defective in material, workmanship, or both.

All transportation costs incurred submitting product to Cycle Country for warranty consideration must be borne by the purchaser. If Cycle Country determines that the product must be returned to the factory for credit, please call 1-800-841-2222 for a Return Merchandise Authorization (RMA) number and shipping instructions.

This warranty does not apply to parts that have been damaged by accident, alteration, abuse, improper maintenance, normal wear, or other causes beyond the manufacturer's control. In order to protect you and your ATV, certain parts of the plow system and/or hardware are designed to fail when the equipment is over-stressed.

Peripheral products such as engines, electric motors, and actuators may carry an original manufacturer's warranty. Please call Cycle Country Accessories Corporation for more information.

CYCLE COUNTRY ACCESSORIES CORPORATION

1701 38TH AVE W

SPENCER, IA 51301

SERVICE: 800-841-2222 FAX: 712-262-0248

E-MAIL: ccac@cyclecountry.com

WEB: www.cyclecountry.com