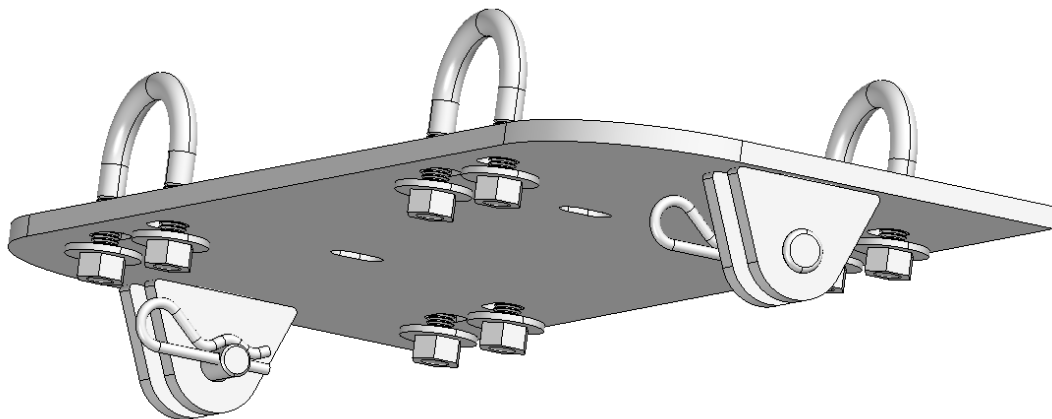




# **ATV PLOW MOUNT**

**For HONDA FOREMAN**  
**ASSEMBLY / OWNER'S MANUAL**

Part No: 15-1610



# OPERATING INSTRUCTIONS

Congratulations! You've just purchased the most durable plow component in the industry. Our plow systems work great for summer or winter plowing. With proper care and maintenance, your Cycle Country plow system will last for years to come!

NOTICE
<p>This assembly requires additional components for operation*</p> <p><b>Cycle Country Push Tube</b></p> <p><b>Cycle Country Plow Kit</b></p> <p><b>Cycle Country Blade Lift System</b> <b>(Winch Kit, Electric Lift, Manual Lift)</b></p> <p><small>*These components may be specific to your vehicle. To find your specific application, use the 'Search by Vehicle' function at <a href="http://www.cyclecountry.com">www.cyclecountry.com</a></small></p>

Please read and understand all assembly instructions, notices and warnings before assembling and operating your Cycle Country plow system.


## Follow these guidelines to ensure satisfactory operation:

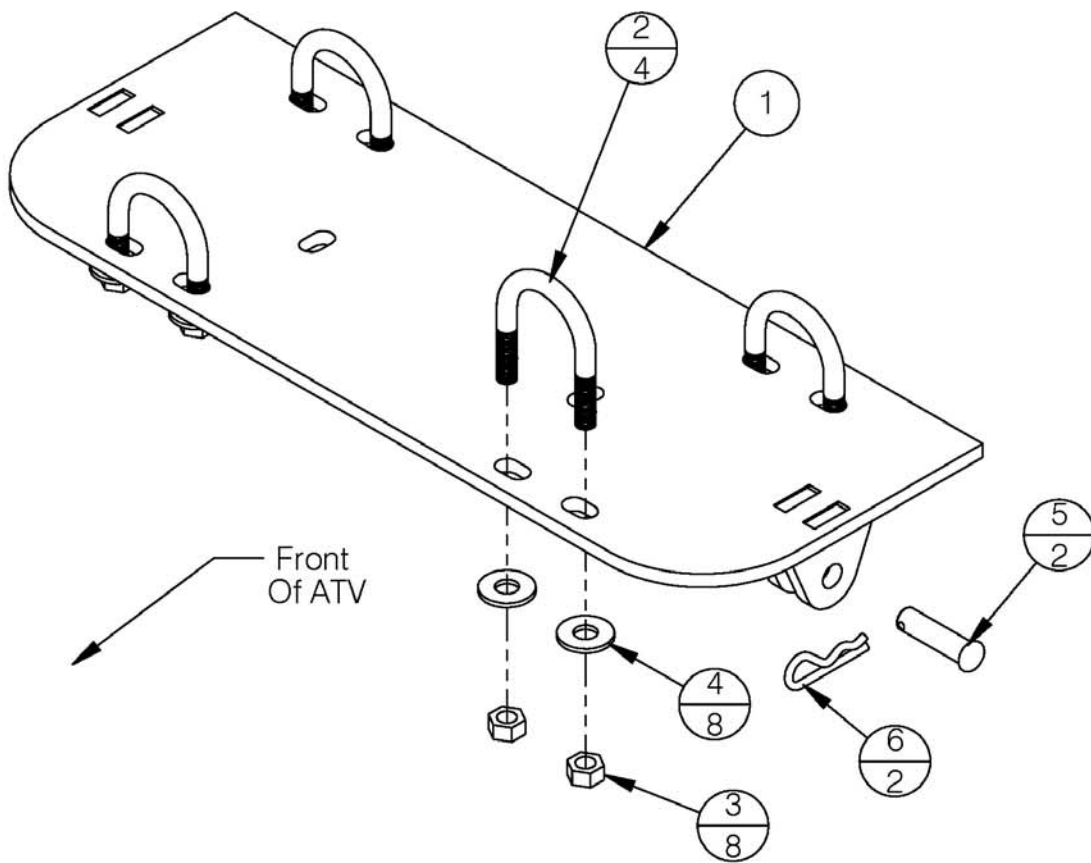
- Read this manual and your ATV operators manual before use.
- Before first use, set plow in the furthest right or left angled position to check for clearance between the plow and front tires.
- Operate with extreme caution on slopes and rough terrain. Be familiar with the area before you plow.
- Be aware of immovable objects that could be hidden in the dirt, gravel or snow you are plowing.
- To avoid damage when plowing dirt, gravel or snow into a pile, reverse direction before raising the plow blade.
- Do not ram the plow blade into piles of dirt, gravel or snow.
- Periodically check for wear and tightness of all fasteners. Replace or re-torque fasteners as necessary.

A complete operator's guide can be downloaded for free at [www.cyclecountry.com](http://www.cyclecountry.com). This guide contains beginner-to-advanced information regarding plow systems and operation.

# SAFETY INFORMATION

Cycle Country plow systems were designed with your safety in mind. In order to protect you and your ATV, certain parts of the plow system and/or hardware are designed to fail when the equipment is over-stressed.

 <b>WARNING</b>
<p><b>To avoid personal injury or damage to your vehicle:</b></p> <p>Do not exceed 5 mph (8 kph) with the blade installed</p> <p>Be aware that vehicle ground clearance is reduced with plow system installed</p> <p>Keep yourself, other people and pets away from the blade and moving parts during operation</p> <p>Before adjusting blade angle or disconnecting the plow system, stop the ATV engine and set the parking brake</p> <p>Remove your plow system before trail riding</p>



## Model Number 15-1610 Parts List

ITEM NO.	QTY.	PART NO.	DESCRIPTION
1	1	CYC6193	Blade Mount Weldment
2	4	PUR1427	U-Bolt 5/16" x 1-3/8" x 2"
3	8	PUR1275	Locknut 5/16" Nylock Clear Zinc
4	8	PUR1244	Flatwasher 5/16"
5	2	PUR1209	Clevis Pin .375 x 1.375 Yellow Zinc
6	2	PUR1249	#3 Hair Pin

**PARTS ORDERING INFORMATION:**  
 Replacement fasteners are common-type and can be purchased locally. Use minimum Grade 5 galvanized fasteners.

## BEFORE YOU BEGIN:

- Please read and understand all instructions.
- Verify all parts and tools are accounted for.
- To ensure a satisfactory installation, follow all steps correctly and in the sequence described.
- All directions referring to right and left are when the rider is sitting on the machine

## TOOLS REQUIRED:

- Basic Hand Wrench and Socket Set
- Torque Wrench
- Plastic Cutting Tool

### NOTICE

Notching of the plastic skid guard is required for reinstallation. Use caution against removing too much material by making several test fittings and trimming small amounts at a time.

## ASSEMBLY INSTRUCTIONS:

1. Remove the skid plate from the bottom of the ATV.
2. Place U-bolts, Item #2, around the frame of the ATV as shown in Illustration 2.
3. Position the mount plate, Item #1, with the plow mount tabs toward the front of the machine and align with the skid plate holes in the frame. Insert onto U-bolts, Item #2.
4. Place washers, Item #4, onto the U-bolts at the slotted holes. Secure U-bolts and plate with nylock fasteners, Item #3. See Illustration 2. Torque all fasteners to specification.



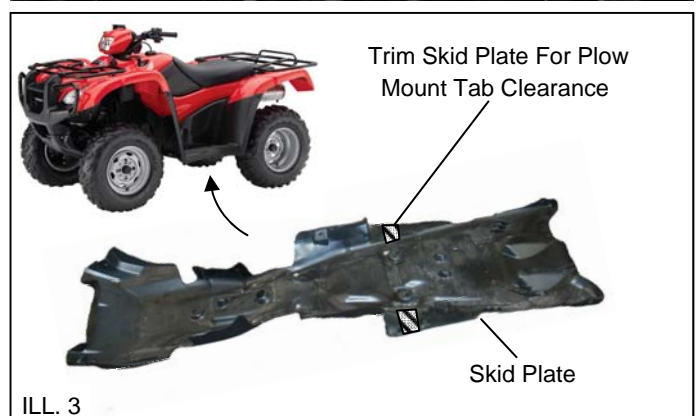
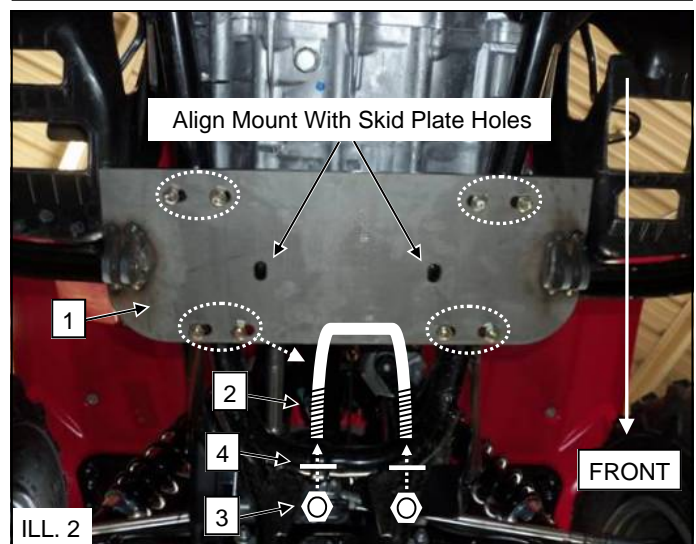
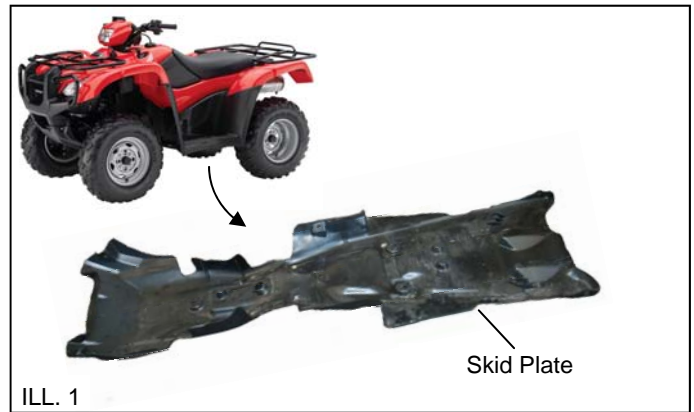
**FASTENER TORQUE:**  
17ft. lbs. (23 Nm)

5. Reinstall the skid plate. Notch the skid plate for mounting tab clearance. See NOTICE.

### NOTICE

*Install the skid plate by starting at the forward fasteners and work rearward. This will allow easier trimming of the guard at the plow mounting*

6. Use clevis pins, Item #5, and hair pins, Item #6, to secure the push tube assembly to the mount plate.





## **One Year Limited Warranty**

For the period of one (1) year from the purchase date, Cycle Country Accessories Corporation will replace for the original purchaser, free of charge, any part or parts found upon examination by Cycle Country Accessories Corporation to be defective in material, workmanship, or both.

All transportation costs incurred submitting product to Cycle Country for warranty consideration must be borne by the purchaser. If Cycle Country determines that the product must be returned to the factory for credit, please call 1-800-841-2222 for a Return Merchandise Authorization (RMA) number and shipping instructions.

This warranty does not apply to parts that have been damaged by accident, alteration, abuse, improper maintenance, normal wear, or other causes beyond the manufacturer's control. In order to protect you and your ATV, certain parts of the plow system and/or hardware are designed to fail when the equipment is over-stressed.

Peripheral products such as engines, electric motors, and actuators may carry an original manufacturer's warranty. Please call Cycle Country Accessories Corporation for more information.

**CYCLE COUNTRY ACCESSORIES CORPORATION**

**1701 38TH AVE W**

**SPENCER, IA 51301**

**SERVICE: 800-841-2222 FAX: 712-262-0248**

**E-MAIL: [ccac@cyclecountry.com](mailto:ccac@cyclecountry.com)**

**WEB: [www.cyclecountry.com](http://www.cyclecountry.com)**